

Although every effort has been made in designing and preparing these plans and checking them for accuracy, the initiator, owner or contractor must check all details and dimensions and be responsible for any changes or adjustments required during actual construction. No representation is made or implied for accuracy.



430 Prime Park, Suite 103 • Peachtree City, GA 30269  
 1904 W. Wayzata Blvd, Suite 100 • Long Lake, MN 55356  
 1000 County Road E West, Suite 120 • Shoreview, MN 55126  
 T: (952) 960-8212 • F: (888) 895-4001 • www.architecturaloverflow.com

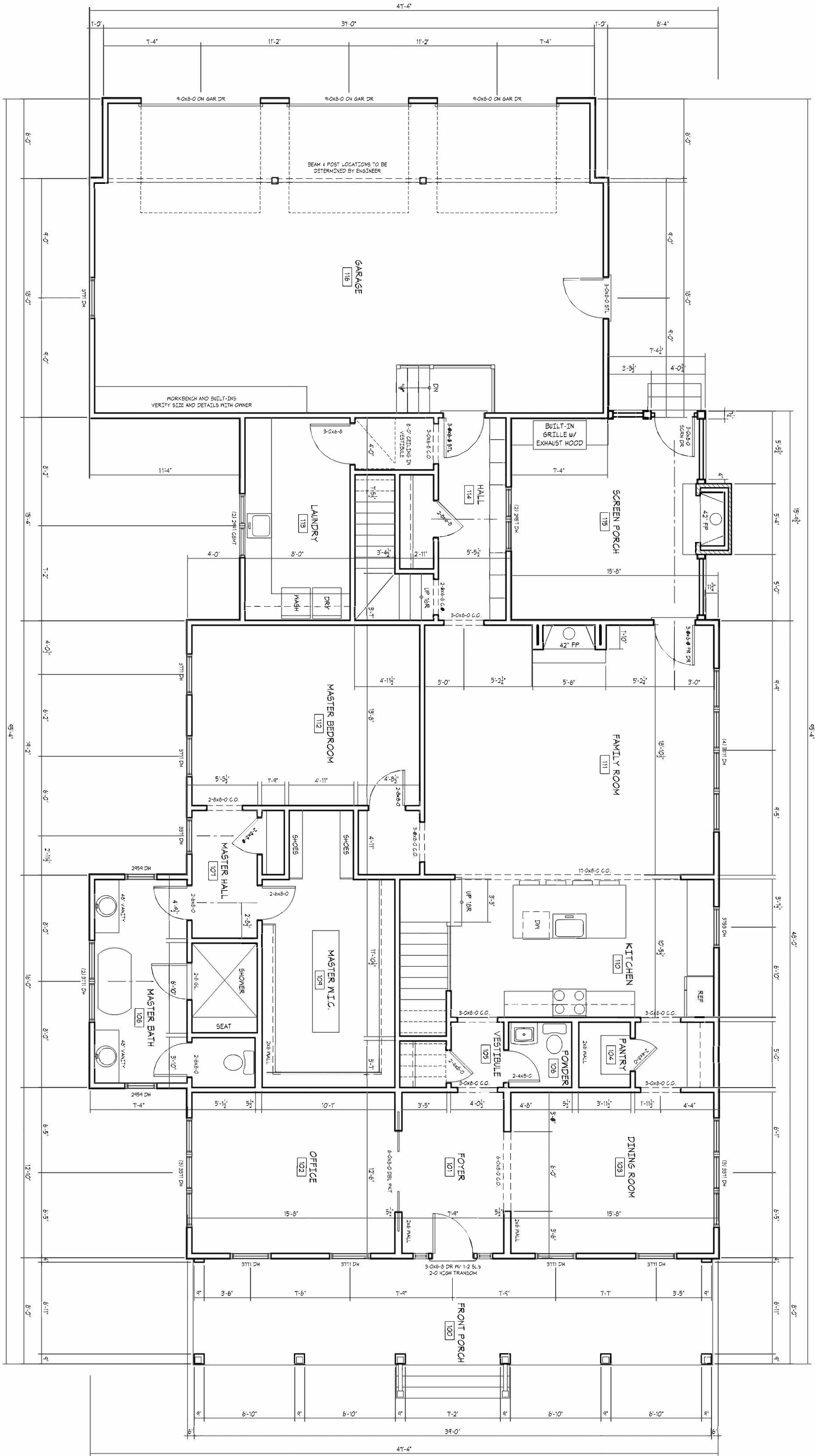
All designs and plans contained in these documents are the original work, owned and property of Historical Concepts. Any reuse or reproduction of these documents in part or whole is strictly prohibited by law without prior written consent from Historical Concepts.

COPYRIGHT HELD BY:

Columbus, Georgia

1/6/16 - REVERSED PLAN  
 12/30/15 - REVISED PERMIT SET

DRAWING BY	LJB
DATE	12/30/15
PROJECT NUMBER	



1/6/16 - REVERSED PLAN  
 12/30/15 - REVISED PERMIT SET

DRAWING BY:	LJB
DATE:	12/30/15
PROJECT NUMBER:	

Columbus, Georgia

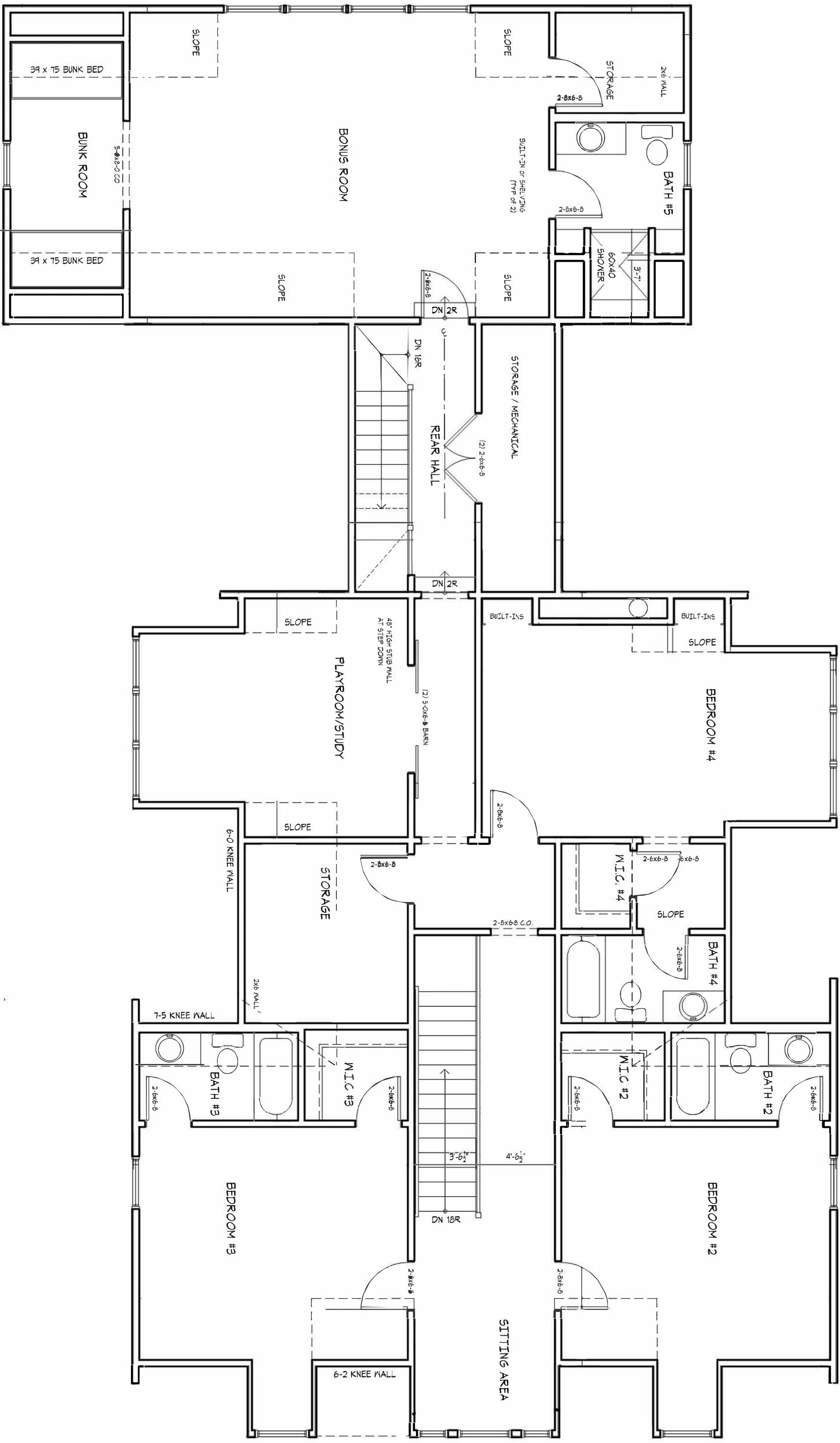
COPYRIGHT HELD BY:

All designs and plans prepared by this firm are the property of Architectural Overflow and its successors. Any reuse or reproduction of these documents in part or whole without the written consent of Architectural Overflow is prohibited.

**ARCHITECTURAL OVERFLOW**

430 Prime Point, Suite 103 • Peachtree City, GA 30269  
 1964 W Wayzata Blvd, Suite 100 • Long Lake, MN 55356  
 1000 County Road E West, Suite 120 • Shoreview, MN 55126  
 T: (952) 960-8212 • F: (888) 895-4061 • www.architecturaloverflow.com

Although every effort has been made in preparing and issuing these plans and including them for accuracy, the reader, owner or contractor shall be responsible for any omissions, errors or omissions required during actual construction. No representation is made or implied for accuracy.



Although every effort has been made in preparing these plans and building items for accuracy, the builder, owner or contractor shall be responsible for any changes or adjustments required during actual construction. No representation is made or implied by ACCUFORM.

All designs and plans contained in these documents are the property of Architectural OverFlow. Any reuse or reproduction of these documents in part or whole without the written consent of Architectural OverFlow is prohibited.

**ARCHITECTURAL OVERFLOW**

430 Prime Point, Suite 103 • Peachtree City, GA 30269  
 1964 W Wayzata Blvd, Suite 100 • Long Lake, MN 55356  
 1000 County Road E West, Suite 120 • Shoreview, MN 55126  
 T: (952) 960-8212 • F: (888) 895-4061 • www.architecturaloverflow.com

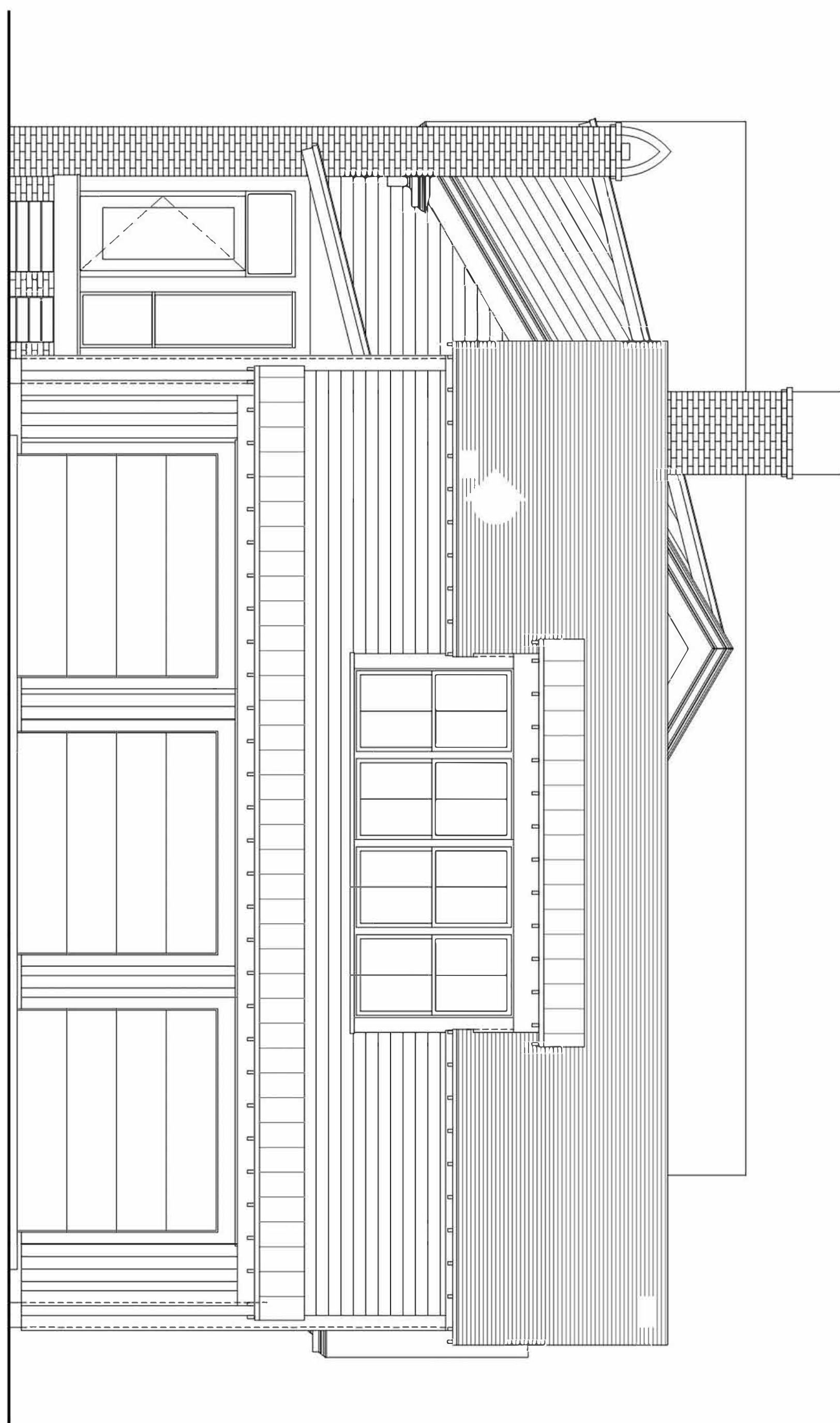
COPYRIGHT HELD BY:

Architectural OverFlow

Columbus, Georgia

1/6/16 - REVERSED PLAN  
 12/30/15 - REVISED PERMIT SET

DRAWING BY	LJB
DATE	12/30/15
PROJECT NUMBER	



1/6/16 - REVERSED PLAN  
12/30/15 - REVISED PERMIT SET

Columbus, Georgia

DRAWING BY	LJB
DATE	12/30/15
PROJECT NUMBER	

COPYRIGHT HELD BY:

All Rights and plans contained in this document are the property of Architectural Overflow. Any reuse or reproduction of these documents in part or whole without the written consent of Architectural Overflow is prohibited.

DRAWN BY:



430 Prime Point, Suite 103 • Peachtree City, GA 30269  
1964 W Wayzata Blvd, Suite 100 • Long Lake, MN 55356  
1000 County Road E West, Suite 120 • Shoreview, MN 55126  
T: | (952) 960-8212 • F: | (888) 895-4061 • www.architecturaloverflow.com

Although every effort has been made in preparing and printing these plans and building items for accuracy, the holder, owner or contractor shall be responsible for any changes or adjustments required during actual construction. No representation is made or implied for accuracy.